

SurveyPro-SS™

Sidescan Survey Support and Quality Control

Triton's new SurveyPro-SS package is an integrated collection of Triton software modules that supports the planning, execution, quality control, and basic data processing for sidescan surveys. It is designed to be used in conjunction with the Triton sidescan data acquisition package, ISIS Offshore-SS. SurveyPro-SS provides everything needed to accurately plan and conduct quality sidescan surveys and perform basic processing of the collected data. Includes Triton's Triton Nav, Real-Time Mosaic, Mosaic Basic, and Triton Map modules operating in an integrated environment with the following capabilities:

SURVEY PLANNING AND REAL-TIME CONTROL

- **Triton Nav**

Survey Planning

- Graphical survey line-plan creation
- Map-based environment integrated with other geo-coded data (GeoTIFFs, DXF coastlines, Bathy DTMs, optional S57 ENCs)

Helmsman Display

- GPS and gyro input
- Real-time display of distance to end of current line, start of next line, compass rose with heading, distance and direction off line, course to waypoint, course to steer, and speed over ground
- User-configurable alarms to monitor: GPS quality and age, vessel speed, and vessel attitude

Map Display

- Ship, fish position, heading and sonar range updated in real-time in Triton Map

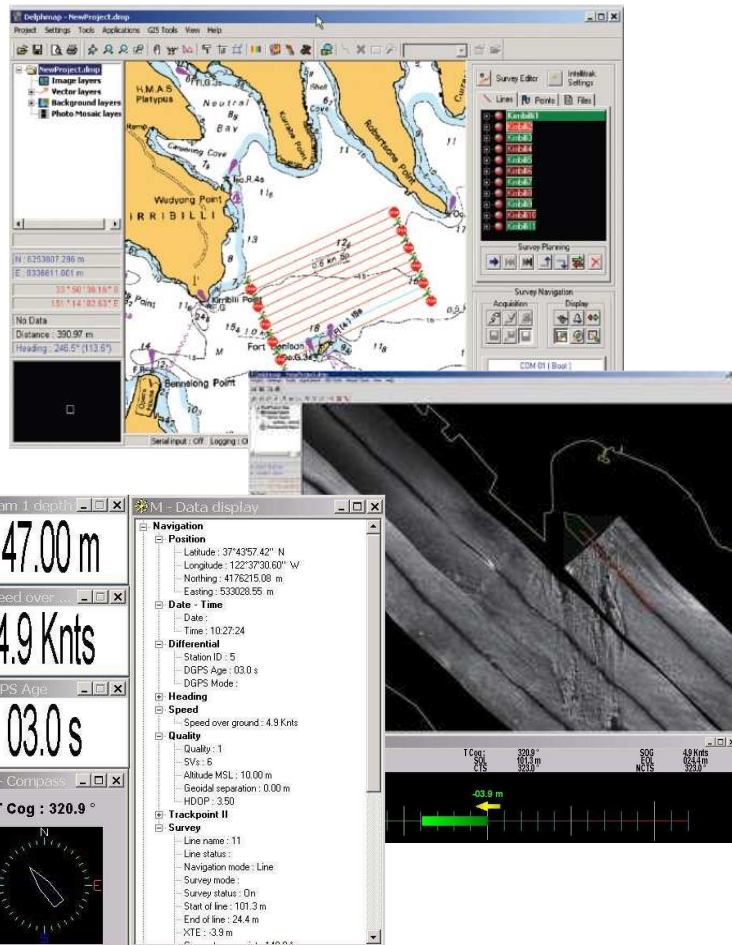
- **Real-Time Mosaic**

- Sidescan data mosaic'd in real-time during data acquisition
- Mosaic continuously updated in the Triton Map display showing vessel position and tracks

BASIC SIDESCAN DATA PROCESSING

- **Mosaic Basic**

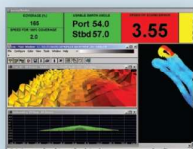
- Off-line basic mosaic creation module
- Navigation processing and smoothing tools
- Lines may be moved relative to one-another and displayed in either "cover-up" or "shine-through" mode
- Mosaics created and displayed in Triton Map



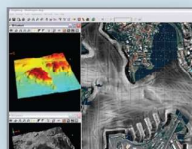
- **Triton Map**

- Multi-layer, map-based display of mosaic imagery co-registered with other geo-coded survey data (e.g. survey lines, vessel and fish tracks, vector coastlines, GeoTIFF images, bathy gridded data, bathy contours or soundings, etc.)

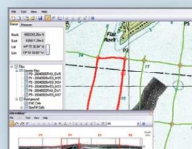
multibeam



sidescan



seismic



TRITON
IMAGING®, INC